

Shenzhen Just Motion Control Electromechanics Co.,Ltd.

MCDC706 ALL DIGITAL AC SERVO DRIVER

Main Feature:

- ◆ Working voltage:24-50VDC
- ◆ Optical coupling isolation servo reset input interface ERC
- ◆ Have real-time virtual oscilloscope,can display the parameter curve about the motor running current,speed ,tracking error and so on.
- ◆ Can set the PID parameters of position loop,speed loop and current loop.
- ◆ You can choose the encoder according the encoder cable.and you can setting pulse equivalent according the inside electronic gear ratio.
- ◆ Using RS232C port,through PC testing software change parameter.
- ◆ Over-current, $I^2 T$, overvoltage , undervoltage, overheating, speeding and differential protection
- ◆ When the indicator light turns green,it means running.when the indicator light turns red,it means protection or offline.

Performance indicators:

MCDC706 is all-digital DC servo drive system adopts high-performance digital signal processor (DSP) and integrated circuit, and come out to be a cost effective product with

Shenzhen Just Motion Control Electromechanics Co.,Ltd.

simple circuit, high integration, easy operation, and strong practicability. MCDC706

provide three feedback loops:(position loop, velocity loop and current loop). Three work

control mode: position, velocity and torque. MCDC706 matches with DC servo motor

under 24~50V and 30~300W.

Electrical indicators:

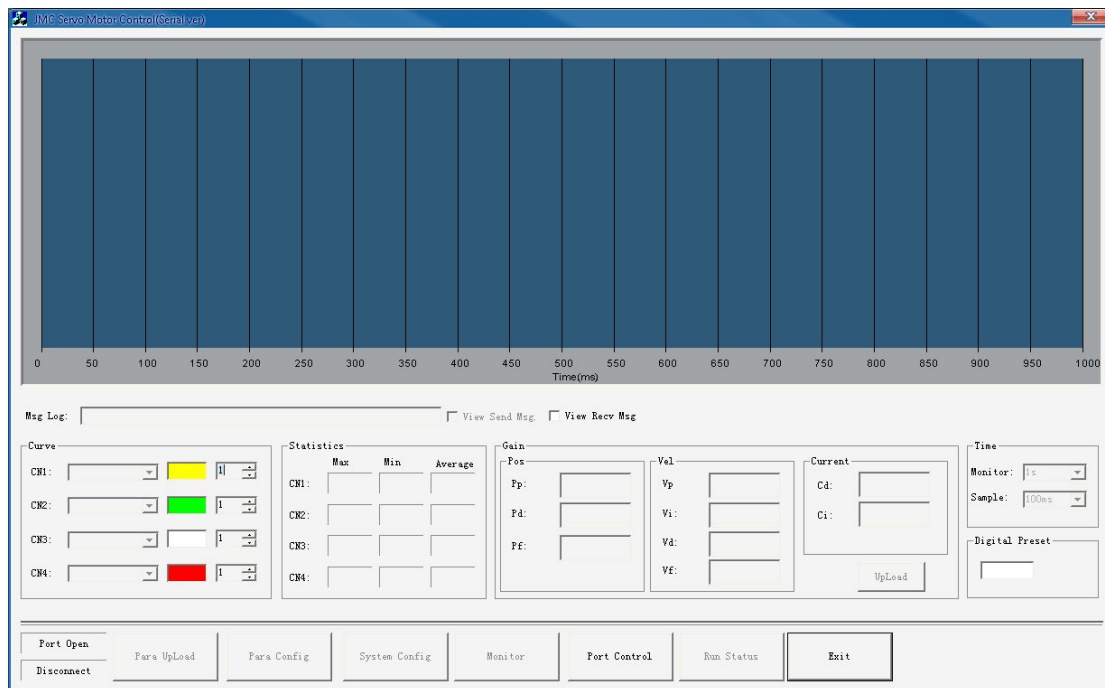
Instructions	Min	Typical values	Max
Supply voltage (VDC)	24V	36V	50V
Output current (A)	-	6	-
Input current (mA)	-	10	-
Work pulse frequency (KHZ)	-	-	250
Low level pulse time (US)	2.5	-	-

Environmental indicators:

cooling	natural cooling or forced convection	
Environment	Space	Avoid dust,oil frost and corrosive gases
	Work temperature	0~+50℃
	Storage temperature	-20℃~+80℃
	Humidity	40~90%RH
Dimension	-	118×76×35
Weight	-	300g

Shenzhen Just Motion Control Electromechanics Co.,Ltd.

Introduction of debug software



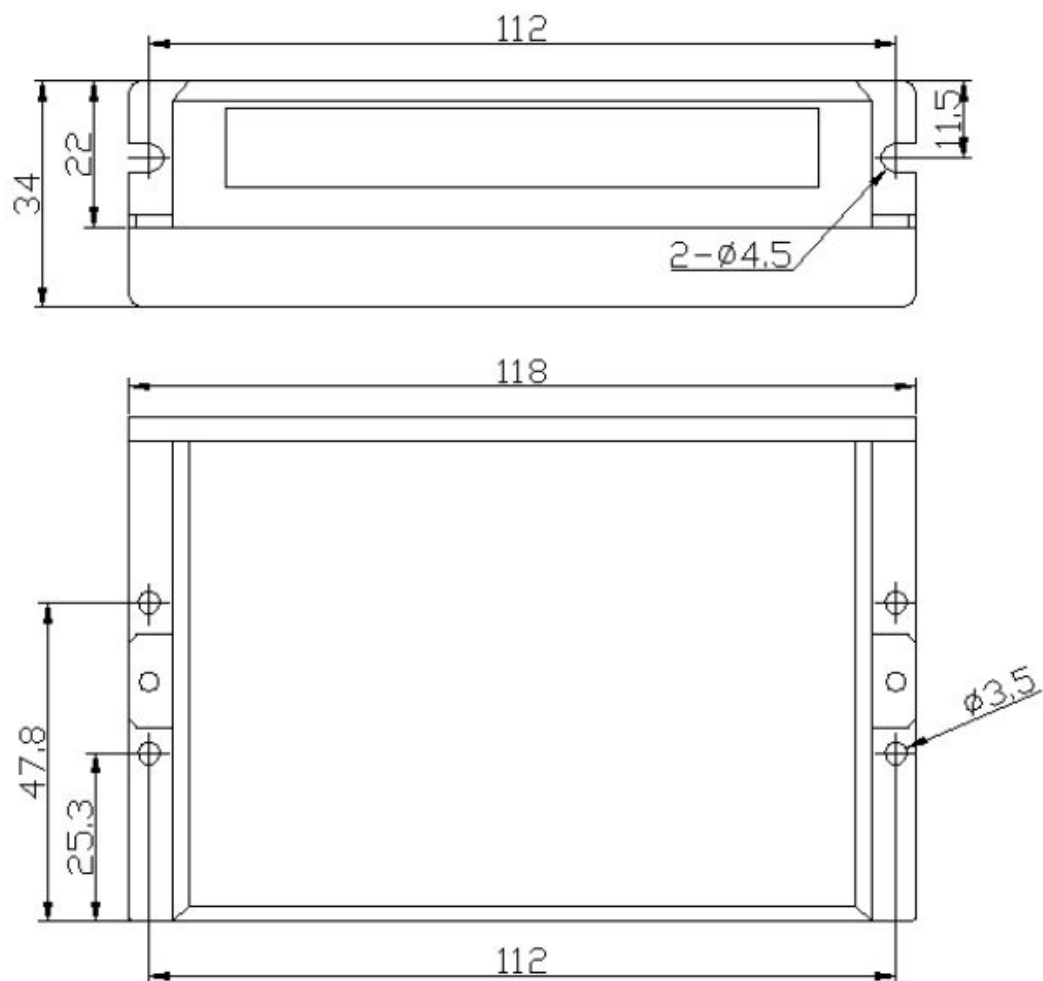
Port control:Can set the communication port number, baud rate of communication

System config:Can set different encoder line number, the system of electronic gear, input logic direction.

Para config:Used to adjust the position loop, speed loop and current loop PID parameters

Specific please refer to the instruction to use

Shenzhen Just Motion Control Electromechanics Co.,Ltd.
Installation dimension (unit: mm)



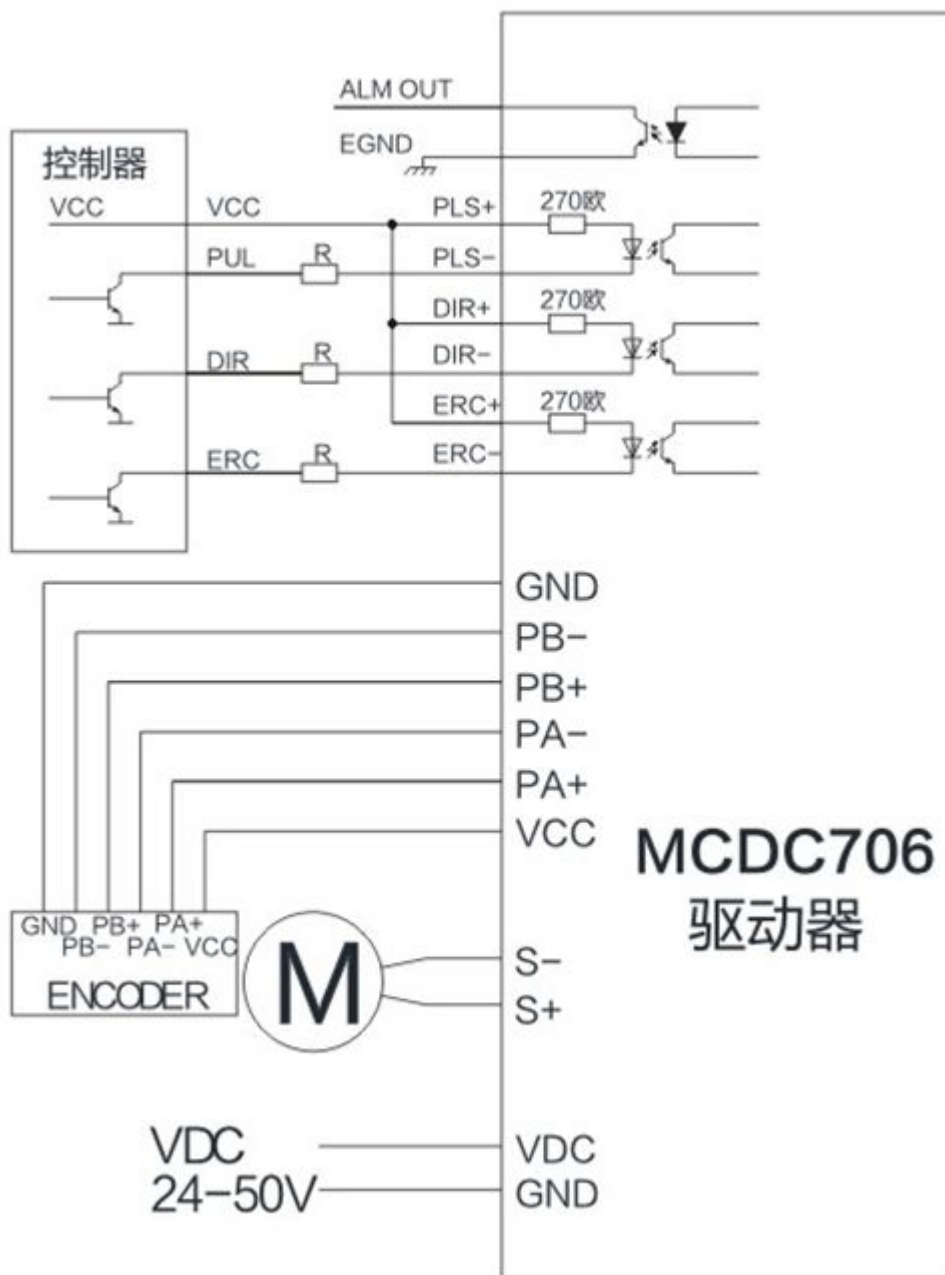
Connection interface

The standard connection interface:

Provides encoder +5V and a maximum 80mA power supply. Servo motor pulses per turn equal to four times of encoder resolution.

The connection interface is as the following diagram when the encoder is in single connection mode.

Shenzhen Just Motion Control Electromechanics Co.,Ltd.



V, R=0

Vcc=12V, R=1K, >0.125W;

Vcc=24V, R=2K, >0.125W.

Resistor must be connected on the terminal of control signal.